



HIGH QUALITY, PANEL OR WALL-MOUNTED, TOUCH SCREEN DISPLAY.
COMPATIBLE WITH ALL MODERN WEB-SERVING BMS CONTROLLERS.

Cost Effective BMS Display & Touch Panel

Ideal for:

Status Feedback and Maintenance Control on BMS Panel Front.
Occupant Feedback and Controls in Property.



“Working For You”



Web-browser based: for universal compatibility with all modern BMS Controllers

7” Size – Large enough for useful information, small enough for discreet presence in property, or to fit on Panels

Very simple panel mounting – No large aperture cut-outs

Tamper-proof frame for safe, robust installation in public access locations

Wired or Wireless connection for ease of installation

Industry Leading Kiosk Application:

- ‘Locked-down’ for end users : minimise support issues
- Auto-retry of connection after any power loss
- Easy configuration for commissioning engineer

Support/Maintenance calls:

- Will auto-detect http / https connection with retry
- Multiple Controller / Multiple Pages per Display

Priced to suit small BMS projects and /or use of multiple one site display or one display / multiple controllers.

Connects to web serving BMS controllers using cabled Ethernet or WiFi for maximum flexibility in new build or retrofit installations.

PRODUCT DATA

SCREEN 7" CAPACITIVE TOUCH SCREEN - 1024*600

7" Display Kit Part Number	WD7-004-01-Rxx
Display resolution	1024x600 pixels
Dimensions (outer dimensions when mounted in own frame)	234.22mm x 127mm x 18.5mm - 9.22 x 5 x 0.73 inches
Screen Size (Diagonal)	177.8mm - 7.0 inches
Touch Panel	COB, Support 5 points touch
CPU/ GPU	RK3126 Cortex-A7 Quad Core 1.2GHz / Mali 400 MP2
Memory DDR/ Flash / Removable	512GB/8GB / up to 32GB via SD card
Operating System / Pre-installed Software	Android 6.01
Operating temperature range	-10° to 40°C
Enclosure protection	IP 40
Wireless Support	WiFi b/g/n
EMI Compliance	CE, FCC, ROHS
Battery Type	Polymer Lithium Battery, 2400mAh/3.7V
Connect to Internet	WiFi or Ethernet (using the supplied USB adaptor)
Loudspeaker / Mic	YES/ YES - Built in

POWER SUPPLY

Rating	10W Switched Mode Power Supply, UL approved
Input / Output Voltages	90-264V AC / 5V DC
Wired Connections	Un-terminated wire/ O/P 0.7/2.5mm Pin Positive barrel connection
Power Supply Frequency Hz	50-60 Hz
Dimensions	82.5mm x 40mm x 29mm

WHAT'S IN THE BOX

7" Display Kit	1 x 7" tablet display, 1 elegant, low-profile frame, 1 x tamper resist mount bracket, 1 x power supply, 1 x Ethernet to USB adaptor
----------------	---

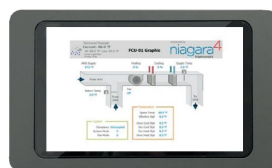
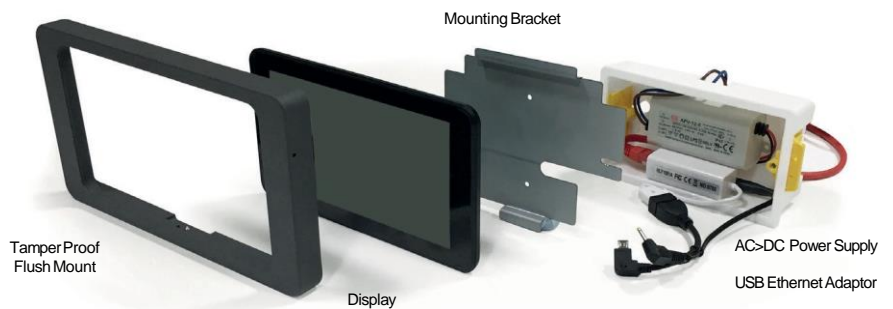
EASY TO INSTALL

INSTALLATION IS FAST AND SIMPLE

Designed to be panel mounted or fitted over standard flush or surface electrical boxes.

Power supply and ethernet adaptor fit inside electrical back box within the void space

Field proven concept across 10,000s of installations



Ethernet or WiFi



HTML 5
Any Web Serving BEMS Controller
(eg Tridium JACE8000)



J-TEQ Energy Ltd.
6 Bain Square, Kirkton Campus
Livingston, West Lothian, EH54 7DQ

01506 460555
sales@j-teq.co.uk
www.j-teq-energy.co.uk

J-TEQ
ENERGY LTD